



Flight Plan & Site Survey

Created using **RPAS Wilco**[®]

Reference No:	8080DF
Title:	FMAC Campers Beach
Pilot Name:	
Pilot Certificate:	
Flight Start:	May 3, 2024 12:34 PM
Flight End:	May 3, 2024 2:34 PM
Flight Area (Latitude):	45° 57' 2.14" N (45.951)
Flight Area (Longitude):	66° 52' 49.27" W (-66.88)
Altitude - Radius:	Alt: 400 ft - Rad: 926.0 m (0.5 nm)
Classification:	UNCONTROLLED
FIR - Contact:	CZQM - 506-867-7173

Please ensure you received all required authorizations prior to flight.

Disclaimer

This Site Survey was created using RPAS Wilco by AIM Robotics. The flight plan contained is intended only for RPAS flights on the date/time and location specified. The user accepts all responsibility for the accuracy and completeness of the information contained.

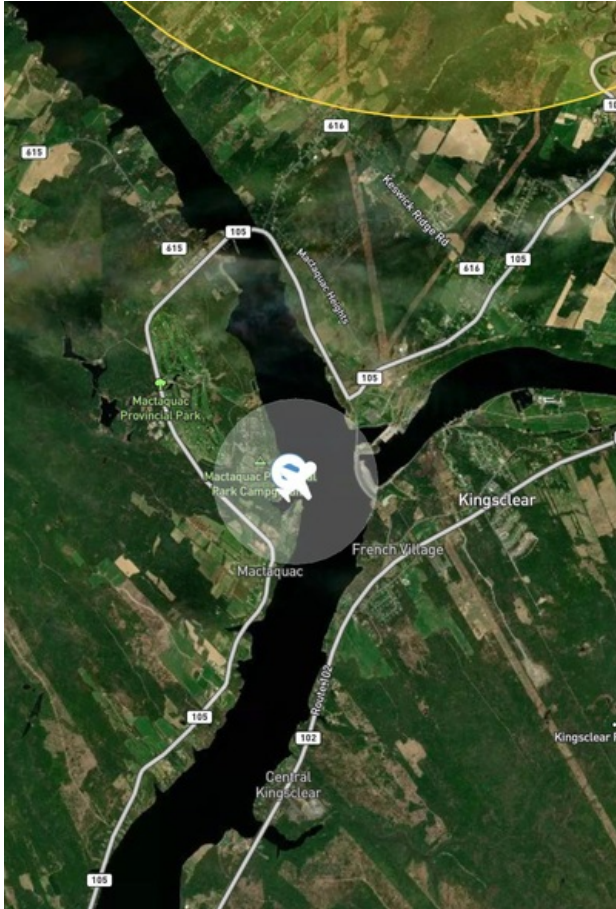
For the complete Terms & Conditions, see

<https://rpswilco.com/#/tnc>

Included

- Site Survey
- Obstacles (if available)
- Nearby Aerodromes
- Canadian Aviation Regulations
- GFA
- Aerodrome Supplements
 - METAR & TAF (if available)
 - NOTAMS
 - CFS



Flight Map



RPAS Specification

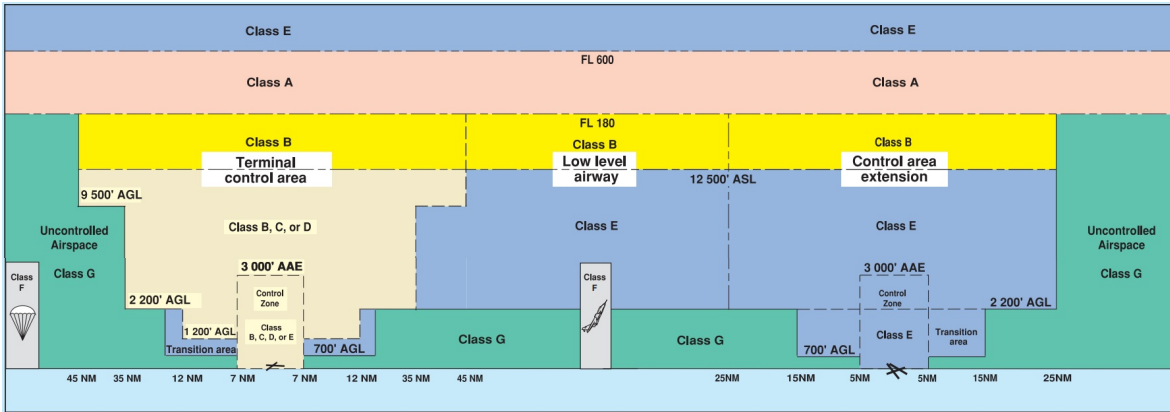
- **Manufacturer:**
MAAC
- **Model:**
MODELAIRPLANE
- **Registration Number:**
- **Eligible for advanced operations:**
Yes
- **Manufacturer RPAS safety assurance:**
 - **Controlled Airspace:** YES
 - **Near People:** NO
 - **Over People:** NO

MAP Details

	Latitude	Longitude
 MODEL	45° 57' 2.14" N (45.951)	66° 52' 49.27" W (-66.88)
 Pilot	45° 57' 5.74" N (45.9516)	66° 52' 52.87" W (-66.8814)



Airspace Classification



Overlying Airspaces

Class	Name	Floor	Ceiling
E	CHARLO, NB CAE	2200AGL	12500MSL
B	CHARLO, NB CAE	12500MSL	18000MSL
E	T739 Airway	2200AGL	12500MSL
B	T739 Airway	12500MSL	18000MSL
B	Fredericton, NB TA	12500MSL	18000MSL
E	Fredericton, NB TA	700AGL	12500MSL
E	T698 Airway	2200AGL	12500MSL
B	T698 Airway	12500MSL	18000MSL

Nearest Aerodromes & Distance from Operation

WEYMAN AIRPARK (CCG3 - AERODROME - Reg)	Lat: 46.038	Long: -66.859	9.858KM	5.32NM	N
SCOTTSFIELD AIRPARK (CCF9 - AERODROME - Reg)	Lat: 45.96	Long: -67.095	16.626KM	8.98NM	W
FREDERICTON (RCMP) (CRC2 - HELIPORT - Reg)	Lat: 45.932	Long: -66.667	16.626KM	8.98NM	E

NEW BRUNSWICK

AERODROME/FACILITY DIRECTORY

WEYMAN AIRPARK NB

CCG3

REF	N46 02 15 W66 51 32 17°W (2015) UTC-4(3) Elev 140' A5003	
OPR	David Bradley 506-450-4087 Reg PPR	
PF	B-1 C-2 D-3,4,5,6	
FLT PLN		
FIC	London 866-WXBRIEF (Toll free within Canada) or 866-541-4104 (Toll free within Canada & USA)	
ACC	(IFR only) Moncton 506-867-7177 or 866-480-8200.	
RWY DATA	Rwy 05/23 3000x80 SAND/GRVL/chip seal	
RCR	Opr No win maint	
COMM		
ATF	tfc 123.2 5NM 3100 ASL	
CAUTION	Glider activity Apr 15-Dec 15. Rwy may be soft during thaw. Scottfield Airpark aprx 12NM W, ATF 123.2.	

NEW BRUNSWICK

AERODROME/FACILITY DIRECTORY

SCOTTSFIELD AIRPARK NB

CCF9

REF	N45 57 37 W67 05 43 17°W (2015) UTC-4(3) Elev 600' A5003	
OPR	Ernie McLean 506-575-1910/8615 506-260-2932 Reg	
PF	B-1 C-2,3 D-3,4,5	
FLT PLN		
FIC	London 866-WXBRIEF (Toll free within Canada) or 866-541-4104 (Toll free within Canada & USA)	
ACC	(IFR only) Moncton 506-867-7177 or 866-480-8200.	
SERVICES		
OIL	15W50	
S	4,5	
RWY DATA	Rwy 05/23 2500x100 GRASS	
RCR	Opr No win maint First 400' each rwy soft in spring/fall	
COM		
ATF	tfc 123.2 5NM 3600 ASL	
CAUTION	Weyman Airpark aprx 12NM E, ATF 123.2.	

NEW BRUNSWICK

AERODROME/FACILITY DIRECTORY

FREDERICTON (RCMP) NB (Heli)

CRC2

REF	N45 55 54 W66 40 00 Adj 18°W (2014) UTC-4(3) Elev 369' A5003	
OPR	RCMP 506-451-6050 Reg PPR	
FLT PLN		
FIC	London 866-WXBRIEF (Toll free within Canada) or 866-541-4104 (Toll free within Canada & USA)	
ACC	(IFR only) Moncton 506-867-7177 or 866-480-8200.	
HELI DATA	FATO/TLOF 77' x 77' ASPH	
LIGHTING	RF(FL) DR(LO) Arr/dep 150° fr heli	
COMM		
ATF	tfc 123.2 5NM 3400 ASL excluding Fredericton Intl CZ	
PRO	Arr/dep 150° & 313° fr heli. Ctc Fredericton TWR 119.0 1045-0345Z ‡ O/T Saint John rdo 119.0 prior to arr/dep to advise intentions.	